



[DCA HOME](#) | [ABOUT DCA](#) | [DCA PROGRAMS](#) | [CONTACT DCA](#)

[BCIS Home](#) | [Log In](#) | [User Registration](#) | [Hot Topics](#) | [Submit Surcharge](#) | [Stats & Facts](#) | [Publications](#) | [FBC Staff](#) | [BCIS Site Map](#) | [Links](#) | [Search](#)



Product Approval
USER: Public User

[Product Approval Menu](#) > [Product or Application Search](#) > [Application List](#) > **Application Detail**

- ▶ COMMUNITY PLANNING
- ▶ HOUSING & COMMUNITY DEVELOPMENT
- ▶ EMERGENCY MANAGEMENT
- ▶ OFFICE OF THE SECRETARY

<p>FL #</p> <p>Application Type</p> <p>Code Version</p> <p>Application Status</p> <p>Comments</p> <p>Archived</p> <p>Product Manufacturer</p> <p>Address/Phone/Email</p> <p>Authorized Signature</p> <p>Technical Representative</p> <p>Address/Phone/Email</p> <p>Quality Assurance Representative</p> <p>Address/Phone/Email</p> <p>Category</p> <p>Subcategory</p> <p>Compliance Method</p> <p>Florida Engineer or Architect Name who developed the Evaluation Report</p> <p>Florida License</p> <p>Quality Assurance Entity</p> <p>Quality Assurance Contract Expiration Date</p> <p>Validated By</p> <p>Certificate of Independence</p> <p>Referenced Standard and Year (of Standard)</p> <p>Equivalence of Product Standards Certified By</p> <p>Sections from the Code</p>	<p>FL13579</p> <p>New</p> <p>2007</p> <p>Approved</p> <p><input type="checkbox"/></p> <p>All American Shutters and Glass</p> <p>1638 Donna Road</p> <p>West Palm Beach, FL 33409</p> <p>(561) 712-9882</p> <p>Don@allamericanshutters.com</p> <p>Frank Bennardo</p> <p>frank@engexp.com</p> <p>Shutters</p> <p>Storm Panels</p> <p>Evaluation Report from a Florida Registered Architect or a Licensed Florida Professional Engineer</p> <p><input checked="" type="checkbox"/> Evaluation Report - Hardcopy Received</p> <p>Frank L. Bennardo, P.E.</p> <p>PE-0046549</p> <p>National Accreditation and Management Institute</p> <p>12/31/2010</p> <p>Stephen R. Walsh P.E.</p> <p><input checked="" type="checkbox"/> Validation Checklist - Hardcopy Received</p> <p>FL13579_R0_COI_Cert_Indep1.pdf</p> <p>FL13579_R0_COI_Cert_Indep2.pdf</p> <table border="0"> <thead> <tr> <th>Standard</th> <th>Year</th> </tr> </thead> <tbody> <tr> <td>TAS 201</td> <td>1994</td> </tr> <tr> <td>TAS 202</td> <td>1994</td> </tr> <tr> <td>TAS 203</td> <td>1994</td> </tr> </tbody> </table>	Standard	Year	TAS 201	1994	TAS 202	1994	TAS 203	1994
Standard	Year								
TAS 201	1994								
TAS 202	1994								
TAS 203	1994								

March 3, 2010

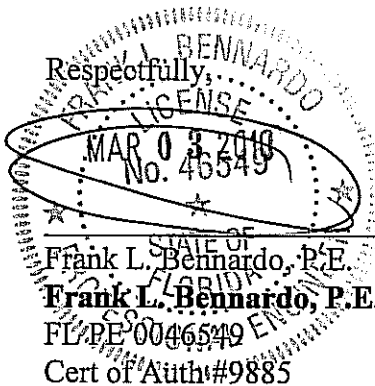
Florida Department of Community Affairs
2555 Shumard Oak Boulevard
Tallahassee, FL 32399

Regarding: All American Shutters and Glass
Quick Mount 50 Storm Panel (HVHZ)
Project #10-AAS-0002a

To Whom It May Concern:

Please be advised that the below-signed engineer does not have nor will acquire a financial interest in the company manufacturing or distributing the product(s) for which an evaluation report or validation certification has been prepared, as referenced above. This engineer is not owned, operated, nor controlled by the manufacturer or distributor noted above and does not have any financial interest in any other entity involved in the approval process of the above-noted product(s).

Respectfully,



Frank L. Bennardo, P.E.
Frank L. Bennardo, P.E., Inc.
FL/PE 0046549
Cert of Auth #9885

Product Evaluation Report

March 3, 2010

Application Number: _____
FLB Project Number: 10-AAS-0002a

Product Manufacturer: All American Shutters and Glass
Manufacturer Address: 1540 Donna Road
West Palm Beach, FL 33409

Product Name & Description: Quick Mount 50 0.050" Aluminum Storm Panel (HVHZ)

Scope of Evaluation:

This Product Evaluation Report is being issued in accordance with the requirements of the Florida Department of Community Affairs (Florida Building Commission) Rule Chapter 9B-72.070, F.A.C., for statewide acceptance per Method 1(d). All products listed above have been tested and/or evaluated as summarized herein to show compliance with the 2007 Florida Building Code and are, for the purpose intended, at least equivalent to that required by the Code. Re-evaluation of this product shall be required following pertinent Florida Building Code modifications or revisions.

Substantiating Data:

- **PRODUCT EVALUATION DOCUMENTS**

FLB drawing #10-AAS-0002a titled "Quick Mount 50 0.050" Aluminum Storm Panel (HVHZ)", sheets 1-6, prepared by Engineering Express, signed & sealed by Frank L. Bennardo, P.E. is an integral part of this Evaluation Report.

- **TEST REPORTS**

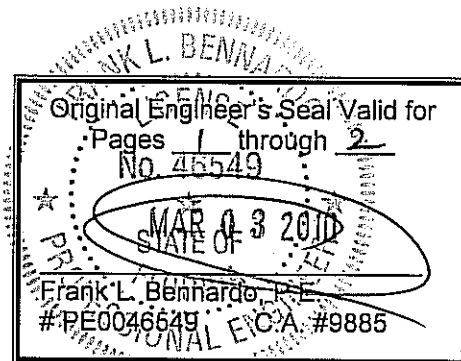
Uniform static structural performance has been tested in accordance with TAS 202 test standards per test report(s) #00-002 by Construction Testing Corporation (CTC).

Large missile impact resistance and cyclic loading performance have been tested in accordance with TAS 201 & 203 test standards per test report(s) #00-002ABP and #00-025 by Construction Testing Corporation (CTC).

- **STRUCTURAL ENGINEERING CALCULATIONS**

Structural engineering calculations have been prepared which evaluate the product based on comparative and/or rational analysis to qualify the following design criteria:

1. Maximum Allowable Spans
2. Minimum Glass Separation
3. Anchor Spacing
4. Maximum Allowable Size/Pressure Combinations



No 33% increase in allowable stress has been used in the design of this product.

Impact Resistance:

Large Missile Impact Resistance has been demonstrated as evidenced in previously listed test reports, and is accounted for in the engineering design of this product.

Wind Load Resistance

This product has been designed to resist wind loads as indicated in the span schedule(s) on the respective Product Evaluation Document (i.e. engineering drawing).

Installation

This product listed above shall be installed in strict compliance with the respective Product Evaluation Document (i.e. engineering drawing), along with all components noted therein.

Product components shall be of the material specified in the product's respective Product Evaluation Document (i.e. engineering drawing).

Limitations & Conditions of Use:

Use of this product shall be in strict accordance with the respective Product Evaluation Document (i.e. engineering drawing) as noted herein.

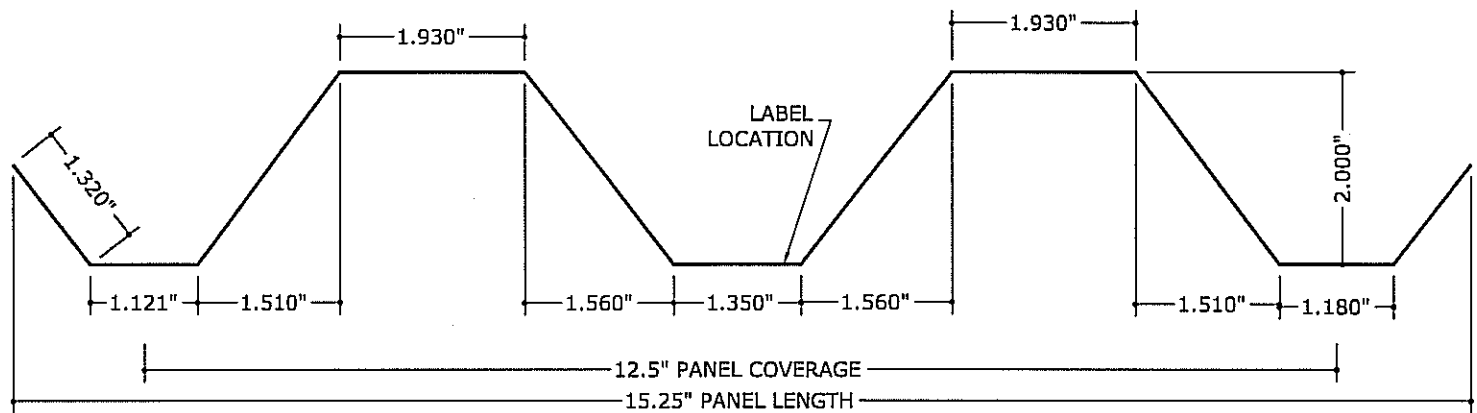
All supporting host structures shall be designed to resist all superimposed loads and shall be of a material listed in this product's respective anchor schedule. Host structure conditions which are not accounted for in this product's respective anchor schedule shall be designed for on a site-specific basis by a registered professional engineer.

All components which are permanently installed shall be protected against corrosion, contamination, and other such damage at all times.

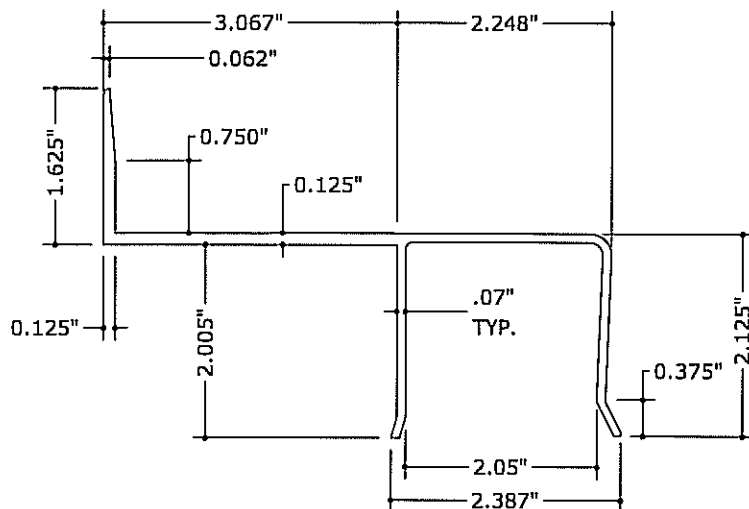
This product has been designed for use within the High Velocity Hurricane Zone (HVHZ).

QUICK MOUNT 50

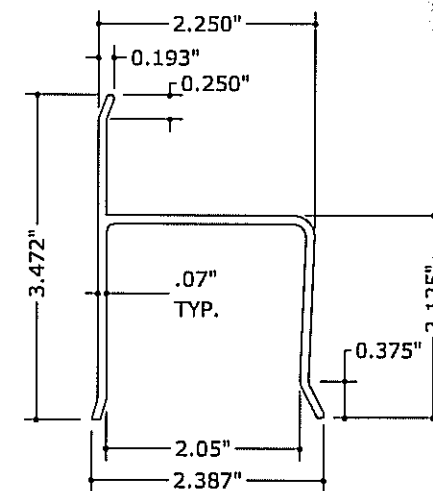
0.050" ALUMINUM STORM PANEL (HVHZ)



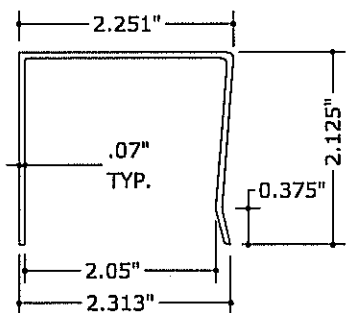
1 STORM PANEL
6"=1'-0"



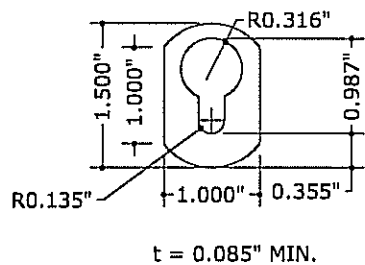
2 BUILDOUT "H" HEADER
6"=1'-0"



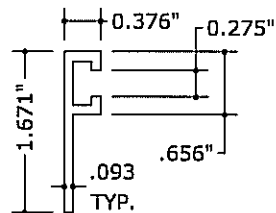
3 "H" HEADER
6"=1'-0"



4 "U" HEADER
6"=1'-0"



5 KEYHOLE WASHER
6"=1'-0" (OPTIONAL)
t = 0.085" MIN.



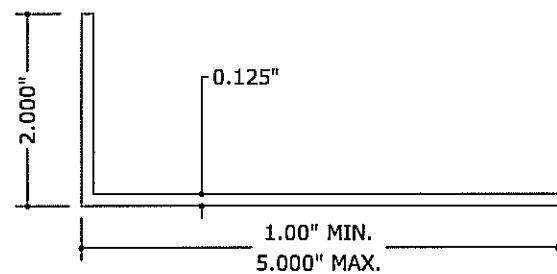
8 "F" TRACK
6"=1'-0"

GENERAL NOTES

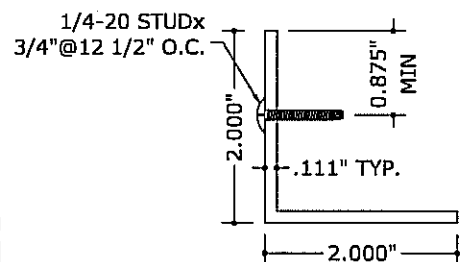
1. THE SYSTEM DESCRIBED HEREIN HAS BEEN DESIGNED AND TESTED IN ACCORDANCE WITH THE 2007 FLORIDA BUILDING CODE, FOR USE WITHIN AND OUTSIDE THE HIGH VELOCITY HURRICANE ZONE, PER TAS 201 / 202 / 203 TEST PROTOCOLS.
2. NO 33-1/3% INCREASE IN ALLOWABLE STRESS HAS BEEN USED IN THE DESIGN OF THIS SYSTEM. WIND LOAD DURATION FACTOR Cd=1.6 HAS BEEN USED FOR WOOD ANCHOR DESIGN.
3. POSITIVE AND NEGATIVE DESIGN PRESSURES CALCULATED FOR USE WITH THIS SYSTEM SHALL BE DETERMINED BY OTHERS ON A JOB-SPECIFIC BASIS IN ACCORDANCE WITH THE GOVERNING CODE.
4. MULTIPLE UNITS MAY BE INSTALLED TO UNLIMITED WIDTH AS SHOWN.
5. THE SYSTEM DETAILED HEREIN IS GENERIC AND DOES NOT PROVIDE INFORMATION FOR A SPECIFIC SITE. FOR SITE CONDITIONS DIFFERENT FROM THE CONDITIONS DETAILED HEREIN, A LICENSED ENGINEER OR REGISTERED ARCHITECT SHALL PREPARE SITE SPECIFIC DOCUMENTS FOR USE IN CONJUNCTION WITH THIS DOCUMENT.
6. PERMIT HOLDER SHALL VERIFY THE ADEQUACY OF THE EXISTING STRUCTURE TO WITHSTAND SUPERIMPOSED LOADS. WOOD BUCKS (BY OTHERS) SHALL BE ANCHORED PROPERLY TO TRANSFER LOADS TO THE EXISTING STRUCTURE.
7. ALL STORM PANELS SHALL BE 3004-H34 ALUMINUM ALLOY WITH MINIMUM THICKNESS t=0.050".
8. ALL EXTRUSIONS SHALL BE 6063-T6 ALUMINUM ALLOY, UNLESS NOTED OTHERWISE.
9. PRODUCT MARKINGS SHALL BE PLACED ON OUTSIDE OF STORM PANEL WITH AT LEAST ONE MARKING EVERY THREE FEET AND SHALL BE PERMANENTLY LABELED WITH AT A MINIMUM THE FOLLOWING INFORMATION:

ALL AMERICAN SHUTTERS AND GLASS
WEST PALM BEACH, FL
TAS 201, 202 & 203
FLORIDA PRODUCT APPROVAL NUMBER

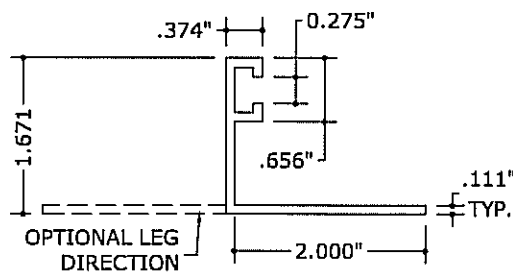
10. TOP & BOTTOM DETAILS SHOWN MAY BE INTERCHANGED AS FIELD CONDITIONS DICTATE. PANELS MAY BE MOUNTED VERTICALLY OR HORIZONTALLY AS APPLICABLE.
11. USE OF KEYHOLE WASHERS IS OPTIONAL IN CONJUNCTION WITH ANY MOUNTING CONDITION. WASHERED WINGNUTS SHALL HAVE 0.860" MINIMUM WASHER DIAMETER.
12. ALL BOLTS & WASHERS SHALL BE ZINC COATED STEEL, GALVANIZED STEEL, OR STAINLESS STEEL WITH A MINIMUM TENSILE YIELD STRENGTH OF 60 KSI.
13. ALL STEEL IN CONTACT WITH ALUMINUM SHALL BE PAINTED OR PLATED.



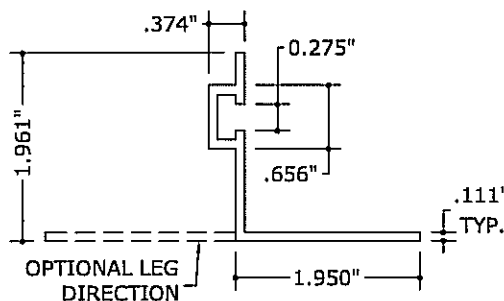
6 ANGLE
6"=1'-0"



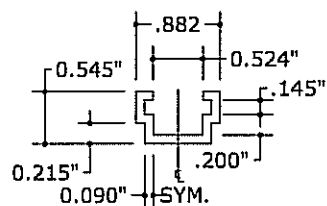
7 STUD ANGLE
6"=1'-0"



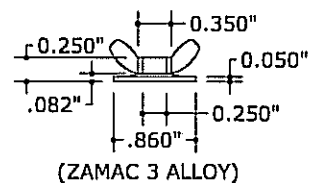
9 "F" ANGLE
6"=1'-0"



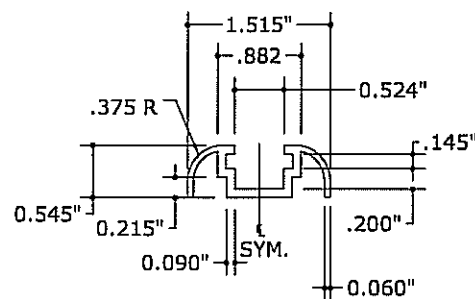
10 REV. "F" ANGLE
6"=1'-0"



11 "C" TRACK
6"=1'-0"



12 WASHERED WINGNUT
6"=1'-0"



13 DECORATIVE "C" TRACK
6"=1'-0"

FRANK L. BERNARDO, P.E.
#RE0046549

03/03/2010

ENGINEERING EXPRESS

160 SW 12th AVENUE, #106
DEERFIELD BEACH, FL 33442
PH: (954) 354-0660 FAX: (954) 354-0443
WWW.ENGINEERINGEXPRESS.COM

CERT. OF AUTH. #9885
A FRANK L. BERNARDO, P.E., INC. INNOVATION

ALL AMERICAN SHUTTERS AND GLASS

1540 DONNA ROAD
WEST PALM BEACH, FL 33409
(561) 712-9882

QUICK MOUNT 50
ALUMINUM STORM PANEL (HVHZ)
FLORIDA STATEWIDE APPROVAL

REMARKS	DRWN	CHKD	DATE
INIT ISSUE	KL	FLB	03/03/10

THIS DOCUMENT IS THE PROPERTY OF FRANK L. BERNARDO, P.E. AND SHALL NOT BE REPRODUCED, COPIED, OR TRANSMITTED IN ANY FORM OR BY ANY MEANS, ELECTRONIC OR MECHANICAL, WITHOUT THE WRITTEN PERMISSION OF FRANK L. BERNARDO, P.E. ALL RIGHTS RESERVED. UNAUTHORIZED REPRODUCTION OR TRANSMISSION OF THIS DOCUMENT ARE NOT PERMITTED AND WILL BE PROSECUTED TO THE FULL EXTENT OF THE LAW.

COPYRIGHT FRANK L. BERNARDO, P.E.

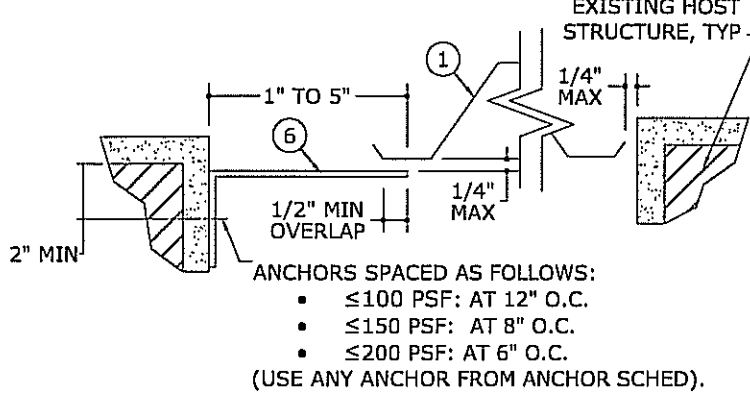
10-AAS-0002a

SCALE: 1/1

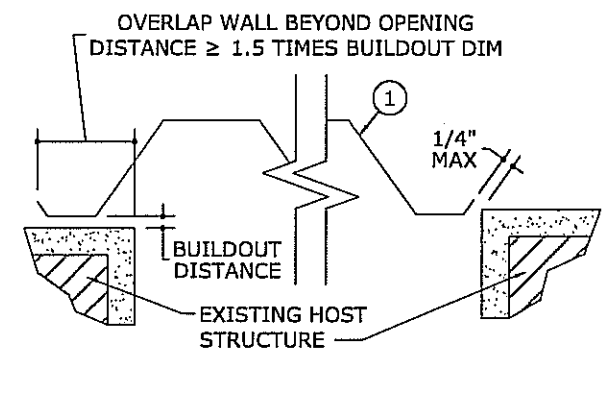
PAGE DESCRIPTION: 01

1

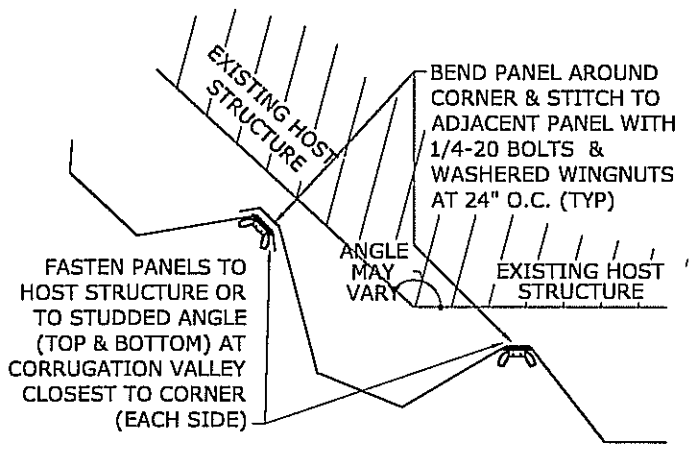
F:\01 Project Files\All American Shutters (AAS)\2010\10-AAS-0002\F1L8211 FSA Name Change\10-AAS-0002_01a HVHZ Quick Mount 50 Aluminum Storm Panel.dwg
keith
03/03/2010 - 2:40pm



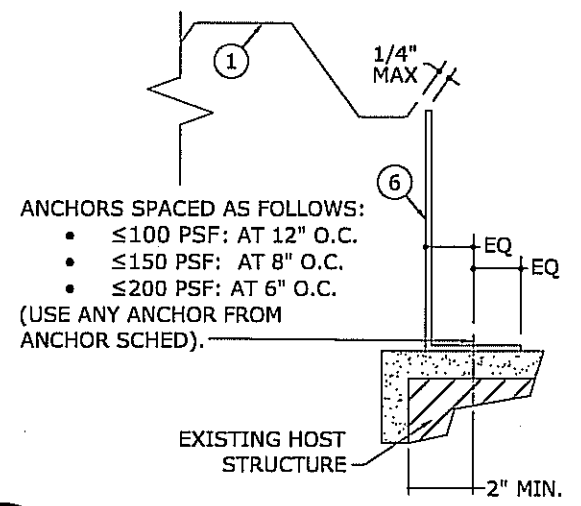
1 TRAP MOUNT CLOSURE
2 N.T.S. HORIZ SECTION



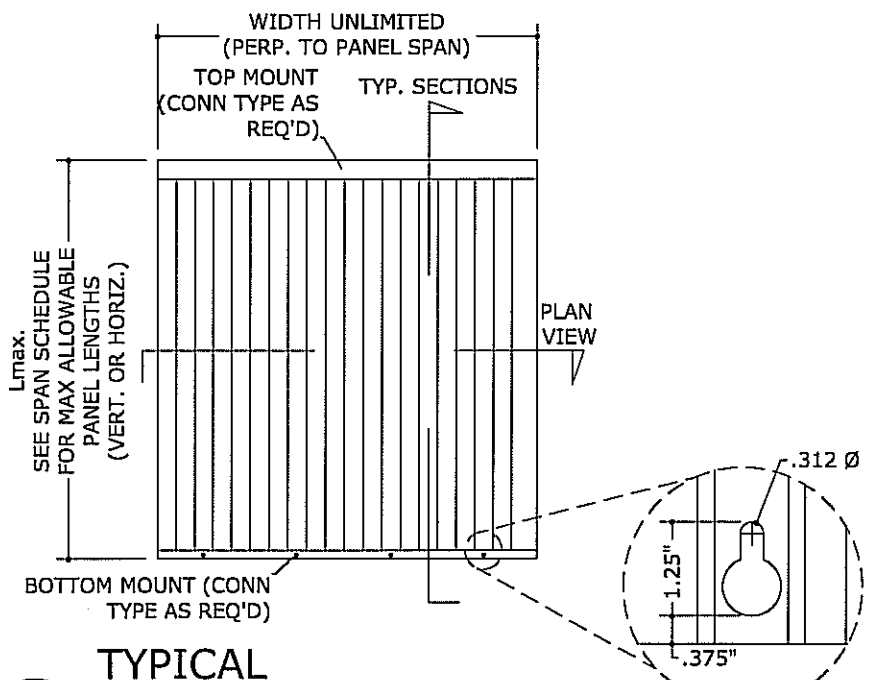
2 WALL MOUNT CLOSURE
2 N.T.S. HORIZ SECTION



3 CORNER CLOSURE
2 N.T.S. HORIZ SECTION



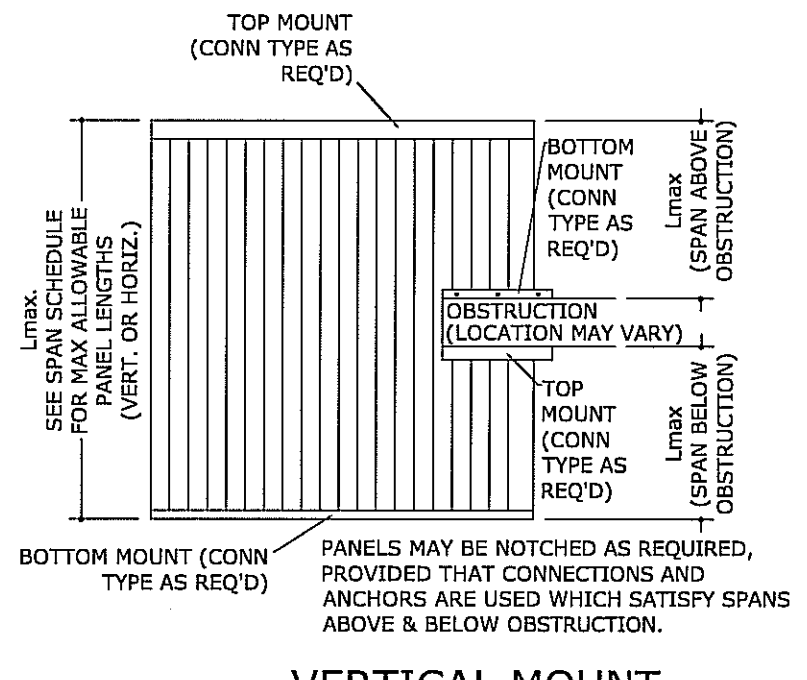
4 BUILD-OUT CLOSURE
2 N.T.S. HORIZ SECTION



5 TYPICAL VERTICAL MOUNT
2 N.T.S. ELEV



6 KEY HOLE SLOT (TYPICAL TOP AND BOTTOM)
2 N.T.S. ELEV



7 VERTICAL MOUNT NOTCHED PANELS
2 N.T.S. ELEV

SPAN SCHEDULE

DESIGN LOAD	MAX PANEL SPAN
30 PSF	11'-1"
35 PSF	10'-8"
40 PSF	10'-4"
45 PSF	10'-0"
50 PSF	9'-9"
55 PSF	9'-6"
60 PSF	9'-4"
62 PSF	9'-3"
65 PSF	9'-1"
70 PSF	8'-9"
72 PSF	8'-7"
75 PSF	8'-3"
80 PSF	7'-9"
90 PSF	6'-10"
100 PSF	6'-2"
110 PSF	5'-7"
120 PSF	5'-2"
130 PSF	4'-9"
140 PSF	4'-5"
150 PSF	4'-1"
160 PSF	3'-10"
170 PSF	3'-7"
180 PSF	3'-5"
190 PSF	3'-3"
200 PSF	3'-1"
210 PSF	2'-11"
220 PSF	2'-9"
230 PSF	2'-8"

SPAN SCHEDULE NOTES:

1. SPANS SHOWN IN "MAX SPAN SCHEDULE" ABOVE ARE MAXIMUM ALLOWABLE SPANS AT EACH RESPECTIVE DESIGN PRESSURE. THIS SCHEDULE MAY BE USED FOR ALL PANELS MOUNTED WITH ANY COMBINATION OF EXTRUSIONS OR DIRECTLY TO HOST STRUCTURE.
2. TABLES ABOVE ARE VALID FOR PANELS MOUNTED HORIZONTALLY OR VERTICALLY.
3. INTERPOLATION BETWEEN LOADS IS ACCEPTABLE, OTHERWISE USE NEXT HIGHER LOAD.

GLASS SEPARATION SCHEDULE

POSITIVE DESIGN LOAD	PANEL SPAN	MINIMUM STORM PANEL SEPARATION FROM GLASS	
		INSTALLATIONS LESS THAN 30' ABOVE GRADE	INSTALLATIONS GREATER THAN 30' ABOVE GRADE
30 PSF	6'-0"	3 1/2"	1 1/2"
	8'-8"	3 1/2"	1 7/8"
	11'-1"	3 1/2"	3"
40 PSF	6'-0"	3 1/2"	1 1/2"
	8'-8"	3 1/2"	2 1/8"
	10'-4"	3 1/2"	3"
50 PSF	6'-0"	3 1/2"	1 1/2"
	8'-8"	3 1/2"	2 3/8"
	9'-9"	3 1/2"	3"
60 PSF	6'-0"	3 1/2"	1 5/8"
	8'-8"	3 1/2"	2 1/2"
	9'-4"	3 1/2"	3"
70 PSF	6'-0"	3 1/2"	1 5/8"
	8'-8"	3 1/2"	2 3/4"
	8'-9"	3 1/2"	2 3/4"

GLASS SEPARATION SCHEDULE NOTES:

1. ENTER SPAN SCHEDULE WITH POSITIVE DESIGN LOAD TO DETERMINE MINIMUM ALLOWABLE SEPARATION FROM GLASS OR DOOR TO BE PROTECTED. SCHEDULE IS REQUIRED FOR USE WITH POSITIVE LOADS ONLY.
2. INTERPOLATION BETWEEN LOADS IS ACCEPTABLE, OTHERWISE USE NEXT HIGHER LOAD.

FRANK L. BENNARDO, P.E.
#PE0046549

03/03/2010

ENGINEERING EXPRESS

160 SW 12th AVENUE, #106
DEERFIELD BEACH, FL 33442
PH: (954) 354-0660 FAX: (954) 354-0443
WWW.ENGINEERINGEXPRESS.COM

CERT OF AUTH #0885
A FRANK L. BENNARDO, P.E., INC. INNOVATION

ALL AMERICAN SHUTTERS AND GLASS

1540 DONNA ROAD
WEST PALM BEACH, FL 33409
(561) 712-9882

QUICK MOUNT 50
ALUMINUM STORM PANEL (HVHZ)
FLORIDA STATEWIDE APPROVAL

DRWN: KL, CHKD: KL, DATE: 03/03/10

REMARKS: INIT ISSUE

COPYRIGHT FRANK L. BENNARDO, P.E.

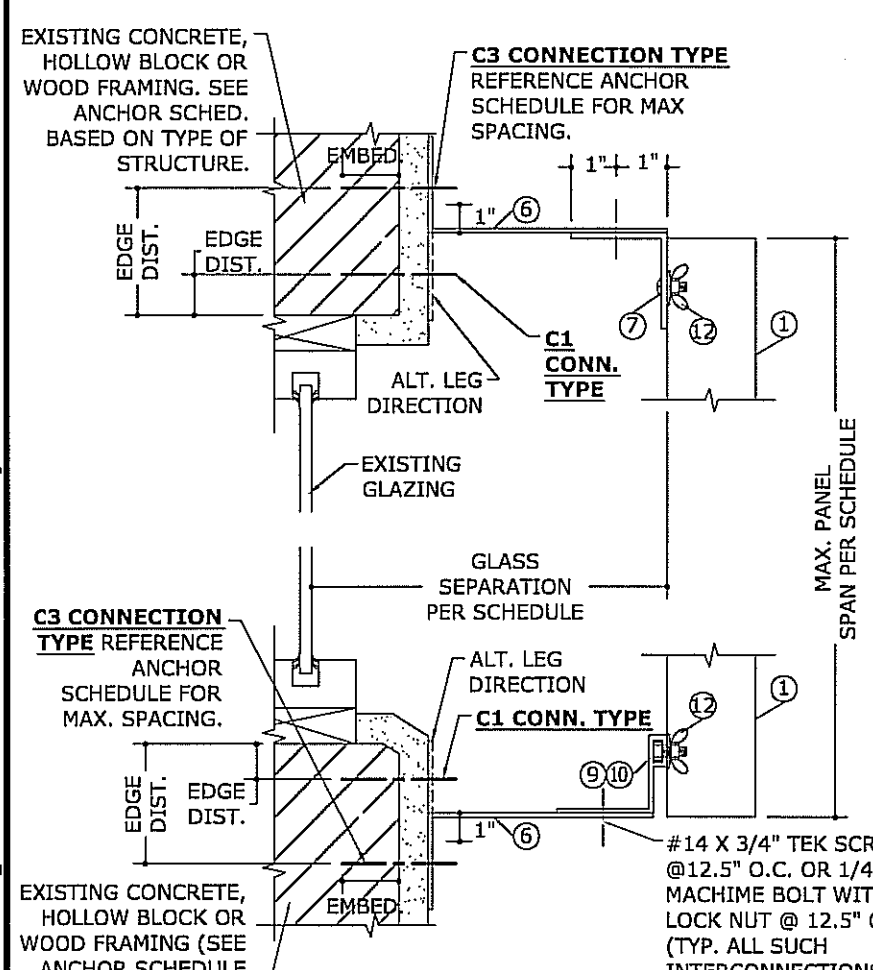
10-AAS-0002a

SCALE: 01

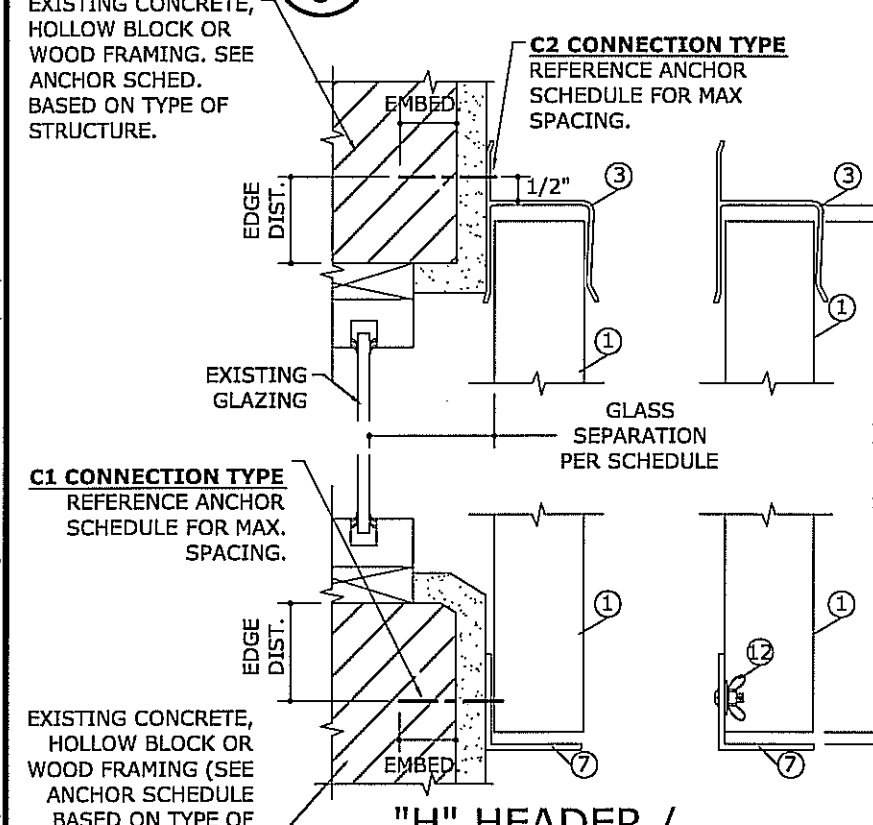
PAGE DESCRIPTION:

2

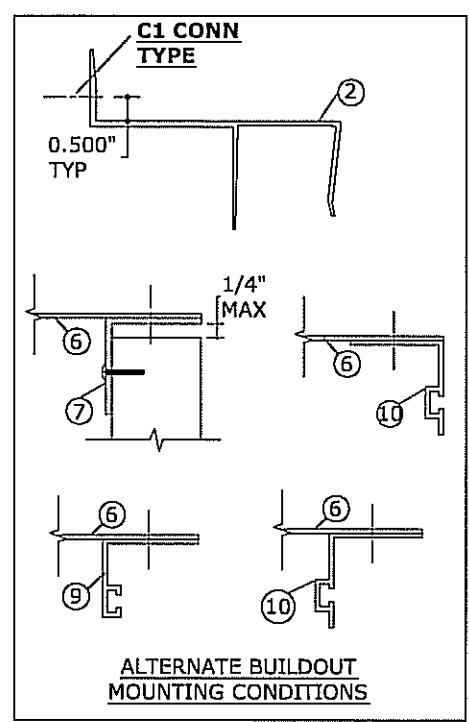
F:\01 Project Files\All American Shutters (AAS)\2010\10-AAS-0002 #FLB211 FSA Name Change\10-AAS-0002_01a HVHZ Quick Mount 50 Aluminum Storm Panel.dwg



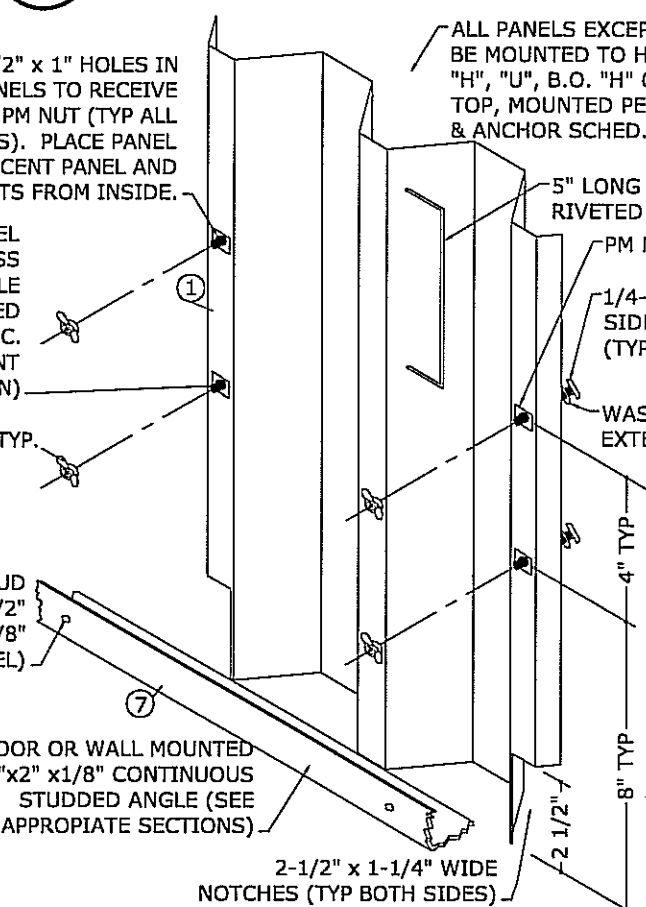
1 BUILDOUT MOUNT
 3 N.T.S. VERT SECTION



4 H HEADER / STUD ANGLE MOUNT
 3 N.T.S. VERT SECTION



2 CEILING/FLOOR MOUNT
 3 N.T.S. VERT SECTION

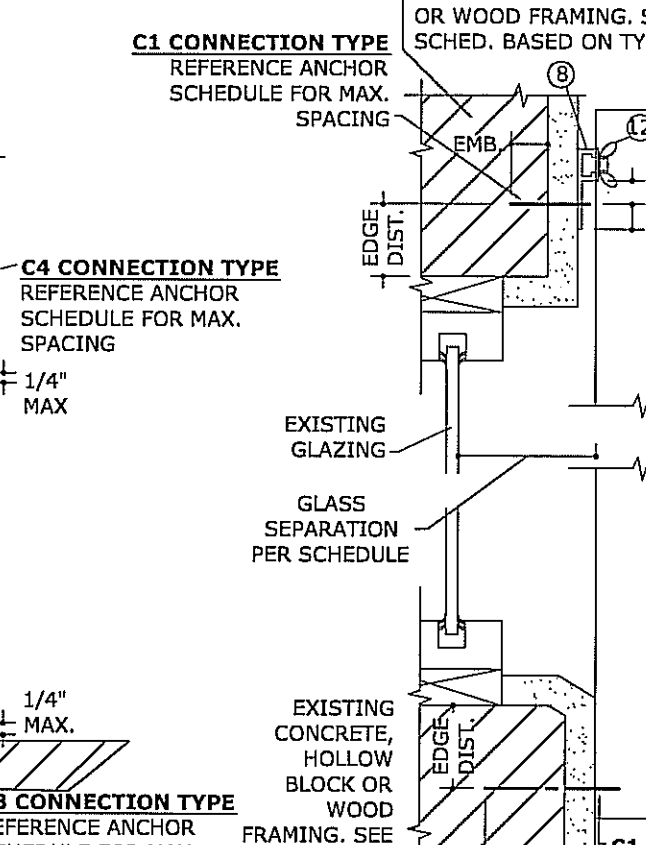
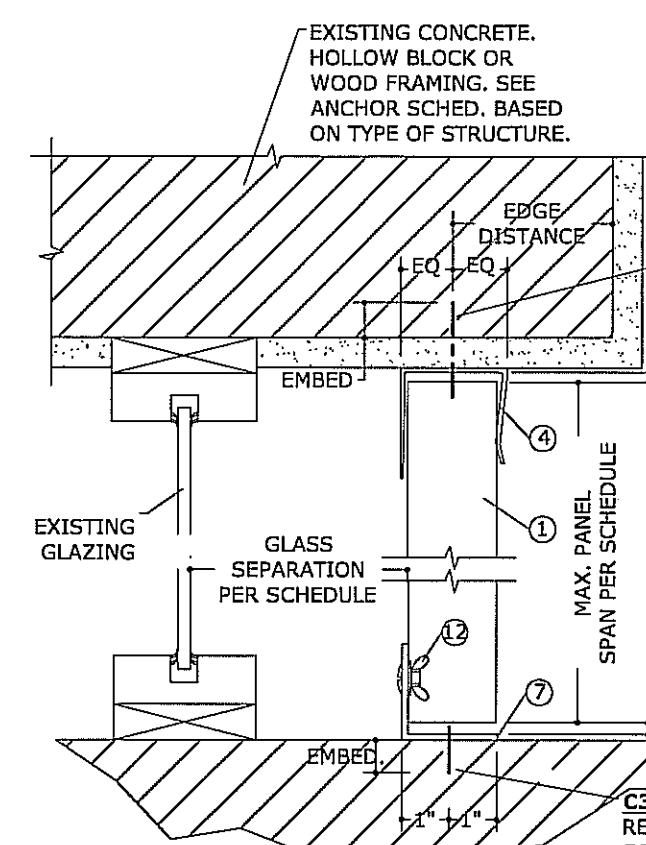


5 INTERIOR MOUNT
 3 N.T.S. ISOMETRIC

PUNCH 1/2" x 1" HOLES IN ADJACENT PANELS TO RECEIVE THIS BOLT W/ PM NUT (TYP ALL BOLTS, BOTH SIDES). PLACE PANEL OVER EACH ADJACENT PANEL AND FASTEN WINGNUTS FROM INSIDE.

DETAIL 5/3 NOTE:
 THIS DETAIL DEPICTS THE CONNECTION OF THE LAST PANEL FOR AN OPENING WITH PANELS INSTALLED FROM INSIDE.

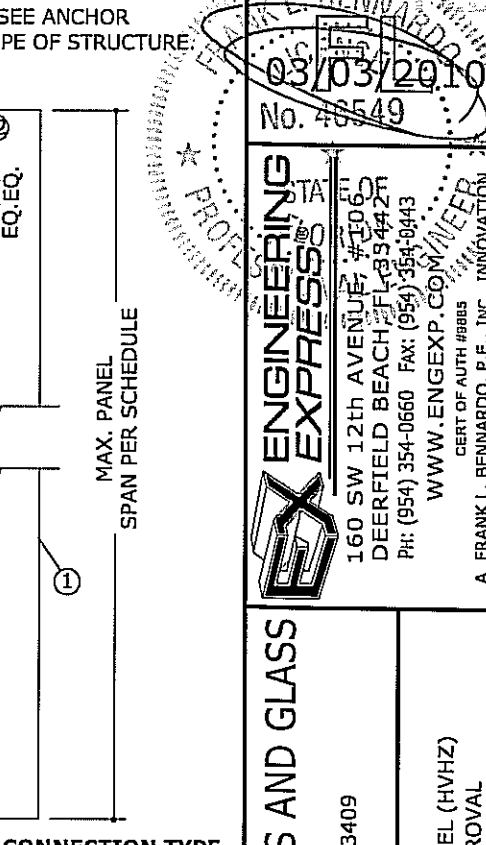
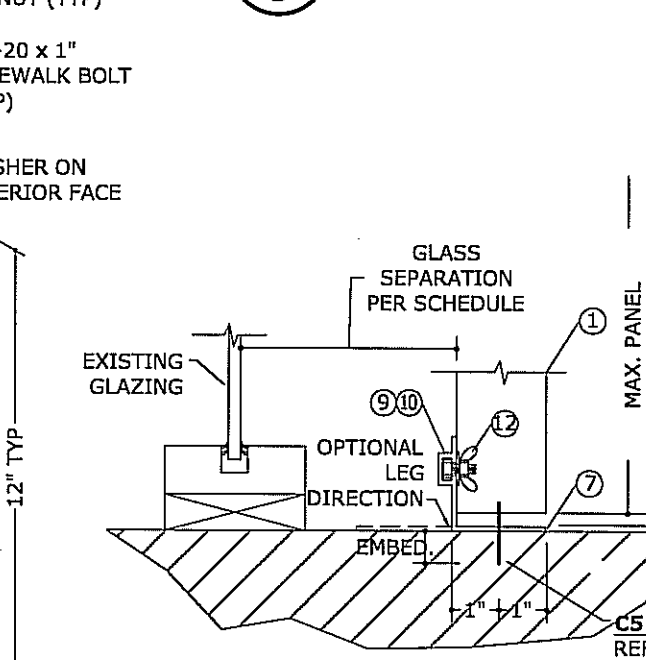
(MAX. PANEL HEIGHT = 8'-8")
 (MAX. DESIGN LOAD = ± 71.6 PSF.)



6 REV. F TRACK
 3 N.T.S. VERT SECTION

ALL PANELS EXCEPT LAST PANEL SHALL BE MOUNTED TO HOST STRUCTURE WITH "H", "U", B.O. "H" OR B.O. "U" HEADER AT TOP, MOUNTED PER APPROPRIATE DETAILS & ANCHOR SCHED.

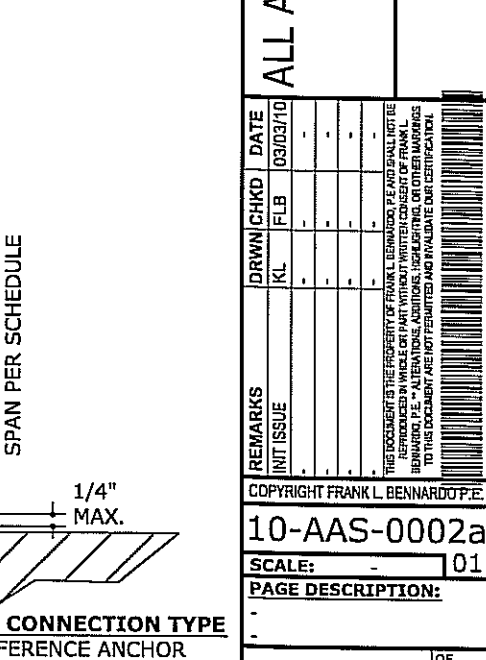
3 F TRACK / DIRECT MOUNT
 3 N.T.S. VERT SECTION



3 F TRACK / DIRECT MOUNT
 3 N.T.S. VERT SECTION

ALL PANELS EXCEPT LAST PANEL SHALL BE MOUNTED TO HOST STRUCTURE WITH "H", "U", B.O. "H" OR B.O. "U" HEADER AT TOP, MOUNTED PER APPROPRIATE DETAILS & ANCHOR SCHED.

3 F TRACK / DIRECT MOUNT
 3 N.T.S. VERT SECTION



3 F TRACK / DIRECT MOUNT
 3 N.T.S. VERT SECTION

FRANK L. BENNARDO, P.E.
 # PE0046549
 03/03/2010
 No. 48549
ENGINEERING EXPRESS
 160 SW 12th AVENUE, #3062
 DEERFIELD BEACH, FL 33442
 Ph: (954) 354-0660 Fax: (954) 354-0943
 WWW.ENGP.COM
 CERT. OF AUTH. #9885
 A. FRANK L. BENNARDO, P.E., INC. INNOVATION

ALL AMERICAN SHUTTERS AND GLASS
 1540 DONNA ROAD
 WEST PALM BEACH, FL 33409
 (561) 712-9882
 QUICK MOUNT 50
 0.050" ALUMINUM STORM PANEL (HVHZ)
 FLORIDA STATEWIDE APPROVAL

DRWN	CHKD	DATE
KL	FLB	03/03/10

REMARKS
 INIT ISSUE

THIS DOCUMENT IS THE PROPERTY OF FRANK L. BENNARDO, P.E. AND SHALL NOT BE REPRODUCED OR TRANSMITTED IN ANY FORM OR BY ANY MEANS, ELECTRONIC OR MECHANICAL, INCLUDING PHOTOCOPYING, RECORDING, OR BY ANY INFORMATION STORAGE AND RETRIEVAL SYSTEM, WITHOUT THE WRITTEN PERMISSION OF FRANK L. BENNARDO, P.E. ANY UNAUTHORIZED USE OF THIS DOCUMENT IS NOT PERMITTED AND IS SUBJECT TO LEGAL ACTION.

COPYRIGHT FRANK L. BENNARDO, P.E.
10-AAS-0002a
 SCALE: 1/8" = 1'-0"
 PAGE DESCRIPTION: 01

3

F:\01 Project Files\All American Shutters (AAS)\2010\10-AAS-0002 #FLB211 FSA Name Change\10-AAS-0002_01a HVHZ Quick Mount 50 Aluminum Storm Panel.dwg
 03/03/2010 - 2:40pm
 keith

ANCHOR SCHEDULE

HOST STRUCT.	ANCHOR	LOAD (psf)	2" MIN EDGE DISTANCE															
			Spans Up To 6'-0"					Spans Up To 8'-8"					Spans Up To 12'-0"					
			CONN TYPE					CONN TYPE					CONN TYPE					
			C1	C2	C3	C4	C5	C1	C2	C3	C4	C5	C1	C2	C3	C4	C5	
CONCRETE	1/4-20 ALL POINTS SOLID-SET WITH 7/8" MIN EMBED (3000psi MIN CONC)	48	12.5"	12.5"	12.5"	12.5"	12.5"	12.5"	12.5"	12.5"	12.5"	12.5"	12.5"	12.5"	8.4"	12.5"	12.5"	12.5"
		62	12.5"	12.5"	12.5"	12.5"	12.5"	12.5"	12.5"	9.2"	12.5"	12.5"	12.5"	12.5"	7.5"	12.4"	12.5"	12.0"
		72	12.5"	12.5"	12.5"	12.5"	12.5"	12.5"	12.5"	7.5"	12.4"	12.5"	12.0"	12.5"	7.5"	12.4"	12.5"	12.0"
		92	12.5"	8.9"	12.5"	12.5"	12.5"	12.5"	12.5"	7.5"	12.4"	12.5"	12.0"	12.5"	7.5"	12.4"	12.5"	12.0"
		230	12.5"	7.5"	12.4"	12.5"	12.0"	12.5"	7.5"	12.4"	12.5"	12.0"	12.5"	7.5"	12.4"	12.5"	12.0"	12.0"
	1/4" TAPCON (ELCO OR ITW) WITH 1-3/4" EMBED (3192 psi MIN CONC)	48	12.5"	12.5"	12.5"	12.5"	12.5"	12.5"	12.3"	12.5"	12.5"	12.5"	12.5"	12.5"	7.4"	12.5"	12.5"	11.5"
		62	12.5"	12.5"	12.5"	12.5"	12.5"	12.5"	8.2"	12.5"	12.5"	12.3"	12.5"	6.7"	11.0"	11.9"	10.7"	10.7"
		72	12.5"	11.5"	12.5"	12.5"	12.5"	12.5"	6.7"	11.0"	11.9"	10.7"	12.5"	6.7"	11.0"	11.9"	10.7"	10.7"
		92	12.5"	7.9"	12.5"	12.5"	12.0"	12.5"	6.7"	11.0"	11.9"	10.7"	12.5"	6.7"	11.0"	11.9"	10.7"	10.7"
		230	12.5"	6.7"	11.0"	11.9"	10.7"	12.5"	6.7"	11.0"	11.9"	10.7"	12.5"	6.7"	11.0"	11.9"	10.7"	10.7"
	5/16" TAPCON (ELCO OR ITW) WITH 1-3/4" EMBED (3000 psi MIN CONC)	48	12.5"	12.5"	12.5"	12.5"	12.5"	12.5"	12.5"	12.5"	12.5"	12.5"	12.5"	12.5"	9.9"	12.5"	12.5"	12.5"
		62	12.5"	12.5"	12.5"	12.5"	12.5"	12.5"	10.9"	12.5"	12.5"	12.5"	12.5"	12.5"	8.9"	12.5"	12.5"	12.5"
		72	12.5"	12.5"	12.5"	12.5"	12.5"	12.5"	8.9"	12.5"	12.5"	12.5"	12.5"	12.5"	8.9"	12.5"	12.5"	12.5"
		92	12.5"	10.5"	12.5"	12.5"	12.5"	12.5"	8.9"	12.5"	12.5"	12.5"	12.5"	12.5"	8.9"	12.5"	12.5"	12.5"
		230	12.5"	8.9"	12.5"	12.5"	12.5"	12.5"	8.9"	12.5"	12.5"	12.5"	12.5"	12.5"	8.9"	12.5"	12.5"	12.5"
	1/4" ELCO PANELMATE (FEMALE, MALE OR PLUS) W/ 1-3/4" MIN EMB, 1/4-20 MACHINE SCREW W/ NUT (3323psi MIN CONC)	48	12.5"	12.5"	12.5"	12.5"	12.5"	12.5"	12.5"	12.5"	12.5"	12.5"	12.5"	12.5"	8.5"	12.5"	12.5"	12.5"
		62	12.5"	12.5"	12.5"	12.5"	12.5"	12.5"	9.4"	12.5"	12.5"	12.5"	12.5"	12.5"	7.6"	12.5"	12.4"	12.2"
		72	12.5"	12.5"	12.5"	12.5"	12.5"	12.5"	7.6"	12.5"	12.4"	12.2"	12.5"	7.6"	12.5"	12.4"	12.2"	12.2"
		92	12.5"	9.0"	12.5"	12.5"	12.5"	12.5"	7.6"	12.5"	12.4"	12.2"	12.5"	7.6"	12.5"	12.4"	12.2"	12.2"
		230	12.5"	7.6"	12.5"	12.4"	12.2"	12.5"	7.6"	12.5"	12.4"	12.2"	12.5"	7.6"	12.5"	12.4"	12.2"	12.2"
HOLLOW BLOCK	1/4-20 ALL POINTS SOLID-SET WITH 7/8" MIN EMBED	48	12.5"	12.5"	12.5"	12.5"	12.5"	12.5"	11.5"	12.5"	12.5"	12.5"	12.5"	7.0"	12.5"	10.4"	10.4"	
		62	12.5"	12.5"	12.5"	12.5"	12.5"	12.5"	7.7"	12.5"	11.1"	11.1"	12.5"	6.3"	10.4"	9.6"	9.6"	
		72	12.5"	10.8"	12.5"	12.5"	12.5"	12.5"	6.3"	10.4"	9.6"	9.6"	12.5"	6.3"	10.4"	9.6"	9.6"	
		92	12.5"	7.4"	12.5"	10.8"	10.8"	12.5"	6.3"	10.4"	9.6"	9.6"	12.5"	6.3"	10.4"	9.6"	9.6"	
		230	12.5"	6.3"	10.4"	9.6"	9.6"	12.5"	6.3"	10.4"	9.6"	9.6"	12.5"	6.3"	10.4"	9.6"	9.6"	
	1/4" TAPCON (ELCO OR ITW) WITH 1-1/4" EMBED	48	11.7"	9.5"	11.7"	11.7"	8.5"	8.1"	4.5"	8.1"	8.1"	5.9"	5.8"	2.7"	5.0"	5.8"	4.2"	
		62	9.0"	5.5"	9.0"	9.0"	6.6"	6.3"	3.0"	6.1"	6.3"	4.5"	5.4"	2.5"	4.1"	5.4"	3.9"	
		72	7.8"	4.2"	7.8"	7.8"	5.6"	5.4"	2.5"	4.1"	5.4"	3.9"	5.4"	2.5"	4.1"	5.4"	3.9"	
		92	6.1"	2.9"	5.6"	6.1"	4.4"	5.4"	2.5"	4.1"	5.4"	3.9"	5.4"	2.5"	4.1"	5.4"	3.9"	
		230	5.4"	2.5"	4.1"	5.4"	3.9"	5.4"	2.5"	4.1"	5.4"	3.9"	5.4"	2.5"	4.1"	5.4"	3.9"	
	1/4" ELCO PANELMATE (FEMALE, MALE OR PLUS) W/ 1-1/4" MIN EMB, 1/4-20 MACHINE SCREW W/ NUT	48	12.5"	12.5"	12.5"	12.5"	12.5"	12.5"	8.8"	12.5"	9.6"	9.6"	11.4"	5.3"	9.7"	6.9"	6.9"	
		62	12.5"	10.7"	12.5"	10.7"	10.7"	12.2"	5.9"	12.0"	7.4"	7.4"	10.5"	4.8"	7.9"	6.4"	6.4"	
		72	12.5"	8.3"	12.5"	9.2"	9.2"	10.5"	4.8"	7.9"	6.4"	6.4"	10.5"	4.8"	7.9"	6.4"	6.4"	
		92	11.9"	5.7"	11.0"	7.2"	7.2"	10.5"	4.8"	7.9"	6.4"	6.4"	10.5"	4.8"	7.9"	6.4"	6.4"	
		230	10.5"	4.8"	7.9"	6.4"	6.4"	10.5"	4.8"	7.9"	6.4"	6.4"	10.5"	4.8"	7.9"	6.4"	6.4"	
	5/16" TAPCON ELCO WITH 1-1/4" EMBED	48	12.5"	12.5"	12.5"	12.5"	12.5"	12.5"	8.2"	12.5"	10.2"	10.2"	10.6"	5.0"	9.1"	7.4"	7.4"	
		62	12.5"	10.0"	12.5"	11.4"	11.4"	11.4"	5.5"	11.2"	7.9"	7.9"	9.9"	4.5"	7.4"	6.8"	6.8"	
		72	12.5"	7.7"	12.5"	9.8"	9.8"	9.9"	4.5"	7.4"	6.8"	6.8"	9.9"	4.5"	7.4"	6.8"	6.8"	
		92	11.1"	5.3"	10.3"	7.7"	7.7"	9.9"	4.5"	7.4"	6.8"	6.8"	9.9"	4.5"	7.4"	6.8"	6.8"	
		230	9.9"	4.5"	7.4"	6.8"	6.8"	9.9"	4.5"	7.4"	6.8"	6.8"	9.9"	4.5"	7.4"	6.8"	6.8"	

HOST STRUCT.	ANCHOR	LOAD (psf)	3/4" MIN EDGE DISTANCE															
			Spans Up To 6'-0"					Spans Up To 8'-8"					Spans Up To 12'-0"					
			CONN TYPE					CONN TYPE					CONN TYPE					
			C1	C2	C3	C4	C5	C1	C2	C3	C4	C5	C1	C2	C3	C4	C5	
WOOD	1/4" TAPCON (ELCO OR ITW) OR #14 WOOD SCREW W/ 1-1/2" EMBED	48	12.5"	12.5"	12.5"	12.5"	12.5"	12.5"	12.5"	12.5"	11.6"	11.6"	12.5"	9.8"	12.5"	8.4"	8.4"	
		62	12.5"	12.5"	12.5"	12.5"	12.5"	12.5"	12.5"	10.8"	12.5"	9.0"	9.0"	12.5"	8.8"	12.5"	7.8"	7.8"
		72	12.5"	12.5"	12.5"	11.2"	11.2"	12.5"	8.8"	12.5"	7.8"	7.8"	12.5"	8.8"	12.5"	7.8"	7.8"	7.8"
		92	12.5"	10.4"	12.5"	8.7"	8.7"	12.5"	8.8"	12.5"	7.8"	7.8"	12.5"	8.8"	12.5"	7.8"	7.8"	7.8"
		230	12.5"	8.8"	12.5"	7.8"	7.8"	12.5"	8.8"	12.5"	7.8"	7.8"	12.5"	8.8"	12.5"	7.8"	7.8"	7.8"
	1/4" ELCO PANELMATE (FEMALE, MALE) W/ 1-7/8" MIN EMBED & 1/4-20 MACHINE SCREW W/NUT	48	12.5"	12.5"	12.5"	12.5"	12.5"	12.5"	12.5"	12.5"	12.5"	12.5"	12.5"	12.5"	11.6"	12.5"	11.1"	11.1"
		62	12.5"	12.5"	12.5"	12.5"	12.5"	12.5"	12.5"	11.6"	12.5"	11.1"	11.1"	12.5"	11.6"	12.5"	11.1"	11.1"
		72	12.5"	12.5"	12.5"	12.5"	12.5"	12.5"	11.6"	12.5"	11.1"	11.1"	12.5"	11.6"	12.5"	11.1"	11.1"	11.1"
		92	12.5"	12.5"	12.5"	12.5"	12.5"	12.5"	11.6"	12.5"	11.1"	11.1"	12.5"	11.6"	12.5"	11.1"	11.1"	11.1"
		230	12.5"	11.6"	12.5"	11.1"	11.1"	12.5"	11.6"	12.5"	11.1"	11.1"	12.5"	11.6"	12.5"	11.1"	11.1"	11.1"
	1/4" LAG SCREW WITH 1.5" MIN THREAD PENETR, SHEAR PERP. OR PARALLEL TO THE GRAIN	48	12.5"	12.5"	12.5"	10.9"	10.9"	12.5"	12.5"	12.5"	7.6"	7.6"	12.5"	9.1"	12.5"	5.5"	5.5"	
		62	12.5"	12.5"	12.5"	8.5"	8.5"	12.5"	10.1"	12.5"	5.9"	5.9"	12.5"	8.2"	12.5"	5.1"	5.1"	
		72	12.5"	12.5"	12.5"	7.3"	7.3"	12.5"	8.2"	12.5"	5.1"	5.1"	12.5"	8.2"	12.5"	5.1"	5.1"	
		92	12.5"	9.7"	12.5"	5.7"	5.7"	12.5"	8.2"	12.5"	5.1"	5.1"	12.5"	8.2"	12.5"	5.1"	5.1"	
		230	12.5"	8.2"	12.5"	5.1"	5.1"	12.5"	8.2"	12.5"	5.1"	5.1"	12.5"	8.2"	12.5"	5.1"	5.1"	

ANCHOR NOTES:

- ANCHORS SHALL BE INSTALLED IN ACCORDANCE WITH MANUFACTURERS' RECOMMENDATIONS.
- TAPCONS MAY BE MANUFACTURED BY ELCO OR ITW. "ELCO PANELMATE" ANCHORS FOR USE IN CONCRETE OR HOLLOW BLOCK MAY BE MALE, FEMALE, OR PANELMATE PLUS, AS ILLUSTRATED. FOR USE IN WOOD, "ELCO PANELMATE" ANCHORS MAY BE MALE OR FEMALE.
- ENSURE MINIMUM 2" EDGE DISTANCE FOR ALL ANCHORS TO CONCRETE & TO HOLLOW BLOCK. EDGE DISTANCE OF 1/2" IS ACCEPTABLE FOR ANCHORS TO STEEL OR ALUMINUM.
- WHERE ANCHORS FASTEN TO NARROW FACE OF STUD FRAMING, ANCHOR SHALL BE LOCATED IN CENTER OF NOMINAL 2x (MIN) WOOD STUD (I.e. 3/4" EDGE DISTANCE IS ACCEPTABLE FOR ANCHORS TO WOOD FRAMING).
- WOOD HOST STRUCTURE SHALL BE "SOUTHERN PINE" G=0.55 OR GREATER DENSITY.
- MINIMUM EMBEDMENT SHALL BE AS NOTED IN ANCHOR SCHEDULE. MINIMUM EMBEDMENT AND EDGE DISTANCE EXCLUDES STUCCO, FOAM, BRICK, AND OTHER WALL FINISHES.
- ANCHOR SCHEDULE APPLIES TO ALL PRODUCTS CERTIFIED HEREIN, BUT ONLY PROVIDES MAXIMUM ALLOWABLE ANCHOR SPACING. MAXIMUM ALLOWABLE SPANS AND PRESSURES INDICATED IN SPAN SCHEDULE SHALL APPLY.
- WHERE EXISTING STRUCTURE IS WOOD FRAMING, EXISTING CONDITIONS MAY VARY. FIELD VERIFY THAT FASTENERS ARE INTO ADEQUATE WOOD FRAMING MEMBERS, NOT INTO PLYWOOD.
- WOOD BUCKS (BY OTHERS) SHALL BE ANCHORED PROPERLY TO TRANSFER LOADS TO THE EXISTING STRUCTURE.
- MACHINE SCREWS SHALL HAVE MINIMUM OF 1/2" ENGAGEMENT OF THREADS IN BASE ANCHOR AND MAY HAVE EITHER A PAN HEAD, TRUSS HEAD, OR WAFER HEAD ("SIDEWALK BOLT") U.N.O.

FRANK L. BENNARDO, P.E.
#PE0046549

03/03/2010

PROFESSIONAL ENGINEER

ENGINEERING EXPRESS

160 SW 12th AVENUE, #1106
DEERFIELD BEACH, FL 33442
PH: (954) 354-0660 FAX: (954) 354-0443

WWW.ENXEXP.COM

CERT. OF AUTH. #0805

A FRANK L. BENNARDO, P.E., INC. INNOVATION

ALL AMERICAN SHUTTERS AND GLASS

1540 DONNA ROAD
WEST PALM BEACH, FL 33409
(561) 712-9882

QUICK MOUNT 50
ALUMINUM STORM PANEL (HVHZ)
FLORIDA STATEWIDE APPROVAL

REMARKS

DATE 03/03/10

DRWN/CHKD

FLB

10-AAS-0002a

SCALE: 1/8" = 1'-0"

PAGE DESCRIPTION:

5

F:\01 Project Files\All American Shutters (AAS)\2010\10-AAS-0002 #FLB211 FSA Name Change\10-AAS-0002_01a HVHZ Quick Mount 50 Aluminum Storm Panel.dwg

03/03/2010 - 2:40pm

kelih

ANCHOR SCHEDULE

HOST STRUCT.	ANCHOR	LOAD (psf)	3" MIN EDGE DISTANCE															
			Spans Up To 6'-0"					Spans Up To 8'-8"					Spans Up To 12'-0"					
			CONN TYPE					CONN TYPE					CONN TYPE					
			C1	C2	C3	C4	C5	C1	C2	C3	C4	C5	C1	C2	C3	C4	C5	
CONCRETE	1/4-20 ALL POINTS SOLID- SET WITH 7/8" MIN EMBED (3000psi MIN CONC)	48	12.5"	12.5"	12.5"	12.5"	12.5"	12.5"	12.5"	12.5"	12.5"	12.5"	12.5"	12.5"	10.6"	12.5"	12.5"	12.5"
		62	12.5"	12.5"	12.5"	12.5"	12.5"	12.5"	12.5"	11.7"	12.5"	12.5"	12.5"	12.5"	9.6"	12.5"	12.5"	12.5"
		72	12.5"	12.5"	12.5"	12.5"	12.5"	12.5"	12.5"	9.6"	12.5"	12.5"	12.5"	12.5"	9.6"	12.5"	12.5"	12.5"
		92	12.5"	11.3"	12.5"	12.5"	12.5"	12.5"	12.5"	9.6"	12.5"	12.5"	12.5"	12.5"	9.6"	12.5"	12.5"	12.5"
		230	12.5"	9.6"	12.5"	12.5"	12.5"	12.5"	12.5"	9.6"	12.5"	12.5"	12.5"	12.5"	9.6"	12.5"	12.5"	12.5"
	1/4" TAPCON (ELCO OR ITW) WITH 1-3/4" EMBED (3192 psi MIN CONC)	48	12.5"	12.5"	12.5"	12.5"	12.5"	12.5"	12.5"	12.5"	12.5"	12.5"	12.5"	12.5"	9.3"	12.5"	12.5"	12.5"
		62	12.5"	12.5"	12.5"	12.5"	12.5"	12.5"	12.5"	10.2"	12.5"	12.5"	12.5"	12.5"	8.3"	12.5"	12.5"	12.5"
		72	12.5"	12.5"	12.5"	12.5"	12.5"	12.5"	12.5"	8.3"	12.5"	12.5"	12.5"	12.5"	8.3"	12.5"	12.5"	12.5"
		92	12.5"	9.9"	12.5"	12.5"	12.5"	12.5"	12.5"	8.3"	12.5"	12.5"	12.5"	12.5"	8.3"	12.5"	12.5"	12.5"
		230	12.5"	8.3"	12.5"	12.5"	12.5"	12.5"	12.5"	8.3"	12.5"	12.5"	12.5"	12.5"	8.3"	12.5"	12.5"	12.5"
	5/16" TAPCON (ELCO OR ITW) WITH 1-3/4" EMBED (3000 psi MIN CONC)	48	12.5"	12.5"	12.5"	12.5"	12.5"	12.5"	12.5"	12.5"	12.5"	12.5"	12.5"	12.5"	11.0"	12.5"	12.5"	12.5"
		62	12.5"	12.5"	12.5"	12.5"	12.5"	12.5"	12.5"	12.1"	12.5"	12.5"	12.5"	12.5"	9.9"	12.5"	12.5"	12.5"
		72	12.5"	12.5"	12.5"	12.5"	12.5"	12.5"	12.5"	9.9"	12.5"	12.5"	12.5"	12.5"	9.9"	12.5"	12.5"	12.5"
		92	12.5"	11.7"	12.5"	12.5"	12.5"	12.5"	12.5"	9.9"	12.5"	12.5"	12.5"	12.5"	9.9"	12.5"	12.5"	12.5"
		230	12.5"	9.9"	12.5"	12.5"	12.5"	12.5"	12.5"	9.9"	12.5"	12.5"	12.5"	12.5"	9.9"	12.5"	12.5"	12.5"
	1/4" ELCO PANELMATE (FEMALE, MALE OR PLUS) W/ 1-3/4" MIN EMB, 1/4-20 MACHINE SCREW W/ NUT (3323psi MIN CONC)	48	12.5"	12.5"	12.5"	12.5"	12.5"	12.5"	12.5"	12.5"	12.5"	12.5"	12.5"	12.5"	10.6"	12.5"	12.5"	12.5"
		62	12.5"	12.5"	12.5"	12.5"	12.5"	12.5"	12.5"	11.7"	12.5"	12.5"	12.5"	12.5"	9.6"	12.5"	12.5"	12.5"
		72	12.5"	12.5"	12.5"	12.5"	12.5"	12.5"	12.5"	9.6"	12.5"	12.5"	12.5"	12.5"	9.6"	12.5"	12.5"	12.5"
		92	12.5"	11.3"	12.5"	12.5"	12.5"	12.5"	12.5"	9.6"	12.5"	12.5"	12.5"	12.5"	9.6"	12.5"	12.5"	12.5"
		230	12.5"	9.6"	12.5"	12.5"	12.5"	12.5"	12.5"	9.6"	12.5"	12.5"	12.5"	12.5"	9.6"	12.5"	12.5"	12.5"
HOLLOW BLOCK	1/4-20 ALL POINTS SOLID- SET WITH 7/8" MIN EMBED	48	12.5"	12.5"	12.5"	12.5"	12.5"	12.5"	12.5"	12.5"	12.5"	12.5"	12.5"	7.7"	12.5"	12.5"	12.0"	
		62	12.5"	12.5"	12.5"	12.5"	12.5"	12.5"	12.5"	8.5"	12.5"	12.5"	12.5"	12.5"	6.9"	11.5"	12.5"	11.1"
		72	12.5"	12.0"	12.5"	12.5"	12.5"	12.5"	12.5"	6.9"	11.5"	12.5"	11.1"	12.5"	6.9"	11.5"	12.5"	11.1"
		92	12.5"	8.2"	12.5"	12.5"	12.5"	12.5"	12.5"	6.9"	11.5"	12.5"	11.1"	12.5"	6.9"	11.5"	12.5"	11.1"
		230	12.5"	6.9"	11.5"	12.5"	11.1"	12.5"	6.9"	11.5"	12.5"	11.1"	12.5"	6.9"	11.5"	12.5"	11.1"	
	1/4" TAPCON (ELCO OR ITW) WITH 1-1/4" EMBED	48	12.5"	11.8"	12.5"	12.5"	10.6"	10.1"	5.6"	10.1"	10.1"	7.3"	7.3"	3.4"	6.2"	7.3"	5.3"	
		62	11.3"	6.9"	11.3"	11.3"	8.2"	7.8"	3.8"	7.7"	7.8"	5.7"	6.8"	3.1"	5.1"	6.8"	4.9"	
		72	9.7"	5.3"	9.7"	9.7"	7.1"	6.8"	3.1"	5.1"	6.8"	4.9"	6.8"	3.1"	5.1"	6.8"	4.9"	
		92	7.6"	3.6"	7.1"	7.6"	5.5"	6.8"	3.1"	5.1"	6.8"	4.9"	6.8"	3.1"	5.1"	6.8"	4.9"	
		230	6.8"	3.1"	5.1"	6.8"	4.9"	6.8"	3.1"	5.1"	6.8"	4.9"	6.8"	3.1"	5.1"	6.8"	4.9"	
	1/4" ELCO PANELMATE (FEMALE, MALE OR PLUS) W/ 1-1/4" MIN EMB, 1/4-20 MACHINE SCREW W/ NUT	48	12.5"	12.5"	12.5"	12.5"	12.5"	12.5"	8.5"	12.5"	12.5"	11.0"	10.9"	5.1"	9.3"	10.4"	7.9"	
		62	12.5"	10.3"	12.5"	12.5"	12.3"	11.7"	5.7"	11.5"	11.1"	8.5"	10.1"	4.6"	7.6"	9.6"	7.4"	
		72	12.5"	8.0"	12.5"	12.5"	10.6"	10.1"	4.6"	7.6"	9.6"	7.4"	10.1"	4.6"	7.6"	9.6"	7.4"	
		92	11.4"	5.4"	10.6"	10.8"	8.3"	10.1"	4.6"	7.6"	9.6"	7.4"	10.1"	4.6"	7.6"	9.6"	7.4"	
		230	10.1"	4.6"	7.6"	9.6"	7.4"	10.1"	4.6"	7.6"	9.6"	7.4"	10.1"	4.6"	7.6"	9.6"	7.4"	
	5/16" TAPCON ELCO WITH 1-1/4" EMBED	48	12.5"	12.5"	12.5"	12.5"	12.5"	12.5"	8.9"	12.5"	12.5"	11.5"	11.4"	5.4"	9.8"	11.4"	8.3"	
		62	12.5"	10.8"	12.5"	12.5"	12.5"	12.3"	5.9"	12.0"	12.3"	8.9"	10.6"	4.8"	8.0"	10.6"	7.7"	
		72	12.5"	8.3"	12.5"	12.5"	11.1"	10.6"	4.8"	8.0"	10.6"	7.7"	10.6"	4.8"	8.0"	10.6"	7.7"	
		92	11.9"	5.7"	11.1"	11.9"	8.7"	10.6"	4.8"	8.0"	10.6"	7.7"	10.6"	4.8"	8.0"	10.6"	7.7"	
		230	10.6"	4.8"	8.0"	10.6"	7.7"	10.6"	4.8"	8.0"	10.6"	7.7"	10.6"	4.8"	8.0"	10.6"	7.7"	

ANCHOR NOTES:

REFER TO ANCHOR NOTES ON PREVIOUS SHEET

FRANK L. BENNARDO, P.E.
#PE0046549

03/03/2010

PROFESSIONAL ENGINEER

ENGINEERING EXPRESS

160 SW 12th AVENUE #108
DEERFIELD BEACH, FL 33442
PH: (954) 354-0660 FAX: (954) 354-0443
WWW.ENGEXP.COM

CERT OF AUTH #885
A FRANK L. BENNARDO, P.E., INC. INNOVATION

ALL AMERICAN SHUTTERS AND GLASS

1540 DONNA ROAD
WEST PALM BEACH, FL 33409
(561) 712-9882

QUICK MOUNT 50
ALUMINUM STORM PANEL (HVHZ)
FLORIDA STATEWIDE APPROVAL

DRWN/CHKD DATE
KL FLB 03/03/10

REMARKS
INT ISSUE

THIS DOCUMENT IS THE PROPERTY OF FRANK L. BENNARDO, P.E. AND SHALL NOT BE REPRODUCED IN WHOLE OR IN PART WITHOUT WRITTEN CONSENT OF FRANK L. BENNARDO, P.E. ANY UNAUTHORIZED REPRODUCTION OR DISTRIBUTION OF THIS DOCUMENT IS NOT PERMITTED AND WILL BE PROSECUTED.

COPYRIGHT FRANK L. BENNARDO, P.E.

10-AAS-0002a

SCALE: 1 OF 1

PAGE DESCRIPTION:

6

F:\01 Project Files\All American Shutters (AAS)\2010\10-AAS-0002\F.LB211 FSA Name Change\10-AAS-0002_01a HVHZ Quick Mount 50 Aluminum Storm Panel.dwg

03/03/2010 - 2:40pm

kelih